





DIAGNOSTIC SYSTEM COMPARISON

	 MaxiDAS® DS708	 MaxiSys™ Mini	 MaxiSys™	 MaxiSys™ PRO
CPU	Samsung S3C2440 ARM9 Processor 400 MHZ	Samsung Exynos Quad-Core Processor 1.4GHz	Samsung Exynos Quad-Core Processor 1.4GHz	Samsung Exynos Quad-Core Processor 1.4GHz
OS	Windows CE	Android 4.0 Ice Cream Sandwich	Android 4.0 Ice Cream Sandwich	Android 4.0 Ice Cream Sandwich
SSD Hard Drive		32 GB	32 GB	32 GB
Touch Screen Display	7.0" 800×480 TFT Resistive Touch Screen	7.9" 1,024 x 768 LED Capacitive Touch Screen	9.7" 1,024 x 768 LED Capacitive Touch Screen	9.7" 1,024 x 768 LED Capacitive Touch Screen
Connectivity	USB 2.0; Ethernet Wi-Fi;	USB 2.0; Wi-Fi; Bluetooth	USB 2.0; Ethernet; Wi-Fi; Bluetooth	USB 2.0; Ethernet; Wi-Fi; Bluetooth
Dual Band 802.11n Wi - Fi	2.4GHz	2.4GHz & 5GHz	2.4GHz & 5GHz	2.4GHz & 5GHz
Internal Battery		5000 mAh 3.7V Lithium Polymer Battery	11000 mAh 3.7V Lithium Polymer Battery	11000 mAh 3.7V Lithium Polymer Battery
Weight (Display)	2.95lb (1.1kg)	1.54lb (0.70kg)	3.12lb (1.42KG)	3.12lb (1.42KG)
Camera (rear)		5.0 Megapixel, AF with Flashlight	5.0 Megapixel, AF with Flashlight	5.0 Megapixel, AF with Flashlight
Wireless VCI		•	•	•
Optional Lab Scope		•	•	•
Optional Video - Scope		•	•	•
Boot Up Time	40 Seconds	20 Seconds	20 Seconds	20 Seconds
Complete OEM-Specific Scanner Coverage	•	•	•	•
AutoVIN Technology		•	•	•
MaxiFix Cloud-Based Information System		•	•	•
Shop Manager		•	•	•
ECU Coding	Minimum	Advanced	Advanced	Advanced
ECU Flash Programming				•
Subscription-Based On-Line Updates	•	•	•	•
J2534 Hardware Included				•



Autel intelligent Technology Co., Ltd.

Add: East Side, 1st floor of SZICC Bldg ., 1089 Chaguang Road, Xili, Nanshan, Shenzhen China, 518055

Tel: 0086-755-86147779, **Fax:** 0086-755-86147758, **Email:** sales@auteltech.com, **Web:** www.auteltech.com



MaxiSys®



MaxiSys Pro

MaxiSys

A Revolution in Diagnostics

FAST. SMART. MOBILE. POWERFUL



AUTEL®

Email: sales@auteltech.com | **Web:** www.auteltech.com

MaxiSys

When Autel first introduced the MaxiDAS, it proved such an amazing tool that many people wish they had never bought the others.

Designed with the DNA of Autel's diagnostics family, the MaxiSys is built to offer many of the prestigious qualities of the MaxiDAS DS708 with extreme ease of use and powerful diagnostic performance. Moreover the MaxiSys has evolved far beyond the original capabilities. Utilizing an A9 quad-core 1.40GHz processor that offers 50% increase in speed versus competing products, a 9.7" LED display with a capacitive touch screen of 1,024 X 768 resolution, based on the revolutionary multitask-capable Android Operating System, and combined with the best possible coverage of OE-level diagnostics, the MaxiSys is the perfect diagnostic solution for shops and technicians who demand unrivalled technology for smart repairs and services.



Unrivalled Speed

MaxiSys is the fastest scanner ever in the market. It features an extraordinarily fast A9 quad-core processor, a 32GB solid state hard drive and a highly sensitive 9.7" LED capacitive touch screen. The revolutionary open source Android Operating System allows you to perform multiple tasks easily and intuitively. The system boots up in only 20 seconds, which is 5 times faster than competing products, and the diagnostic time for some vehicles is greatly reduced, allowing you to perform your job much quicker.

Smart Technology

Featuring the latest AutoVIN technology to identify CAN vehicles in one touch, and combined with the exclusive AutoScan function, the MaxiSys is the most intelligent system in the industry. These functions allow the technicians to easily detect vehicles, scan all the diagnosable ECUs on every vehicle and run diagnostics on selected systems. Another advanced feature, the industry first cloud-based online community, puts you in touch with the latest tips and expertise from technicians around the world.



PRODUCT FEATURES



Ultrafast Wireless

The MaxiSys features advanced dual-band (2.4GHz and 5GHz) 802.11n Wi-Fi that's up to twice as fast as any previous-generation diagnostic systems. The MaxiSys Vehicle Communication Interface (VCI) connects via dependable Long-Range Class 1 Bluetooth to the host tablet. Once the wireless VCI is connected to the car, the technician is completely free to move around anywhere in the shop. Its wireless connectivity also means you can field updates to the latest software releases, allowing for update anywhere and anytime.

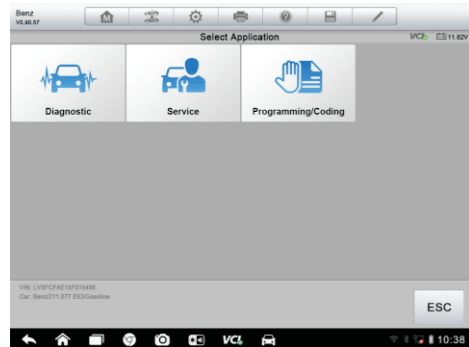
Exceptional OE-level Coverage

As the fastest growing diagnostic company in the world, Autel has been committed to providing the best and easiest-to-use diagnostic solution with the most extensive coverage of all systems for all the major vehicle manufacturers. This enables independent garages to confidently provide comprehensive servicing in their own workshops without relying on dealer availability. Continual software enhancement will provide additional vehicle coverage.



ECU Coding and Programming

The Coding function is used to configure the vehicle control modules (ECUs) with extra parameters, while Programming is used to reflash the vehicle ECUs. These functions allow you to update the computer software on the vehicle to the latest version, as well as to reprogram adaptive data for certain components after making repairs or replacements. MaxiSys is one of the very few diagnostic systems in the world with the capability of performing safe and reliable coding and flash programming with affordable costs.



J2534 Reprogramming Capability*

The VCI for MaxiSys PRO is a SAE J2534-1 & -2 Compliant Programming Interface. Using the updated OEM software, it is capable of replacing the existing software/firmware in electronic control units (ECUs), programming new ECUs and fixing software-controlled driveability issues and emission issues.

- Fully compatible with both SAE J2534-1 and J2534-2 reprogramming standards
- Performs the standard PassThru J2534 functionality
- Fast performance ensures quick reprogramming of even the newest controllers

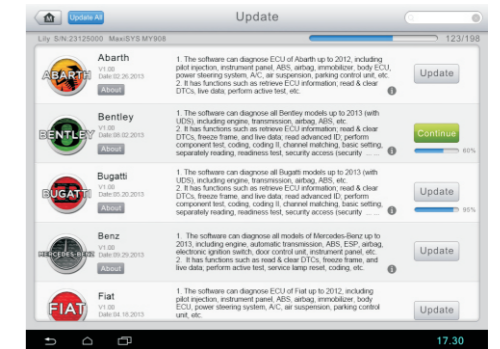
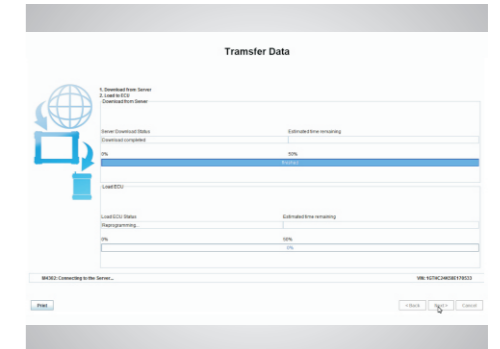
* Requirements: Both a PC and OEM Data subscription are required. Neither is included in this kit.

Instant Software Updates

To keep up with the continuing development of vehicle manufacturers, continuous software improvement is essential for any diagnostic system. MaxiSys was designed with this in mind. Whenever any unknown new vehicle model or a diagnostic error is reported, usually within 48 hours, custom software updates will be made available for the user to download.

Remote Technical Support

The remote technical support function enables Autel technical support personnel to access the tool from a remote location. This method significantly reduces the call time, leading to faster problem resolution and increased customer satisfaction.



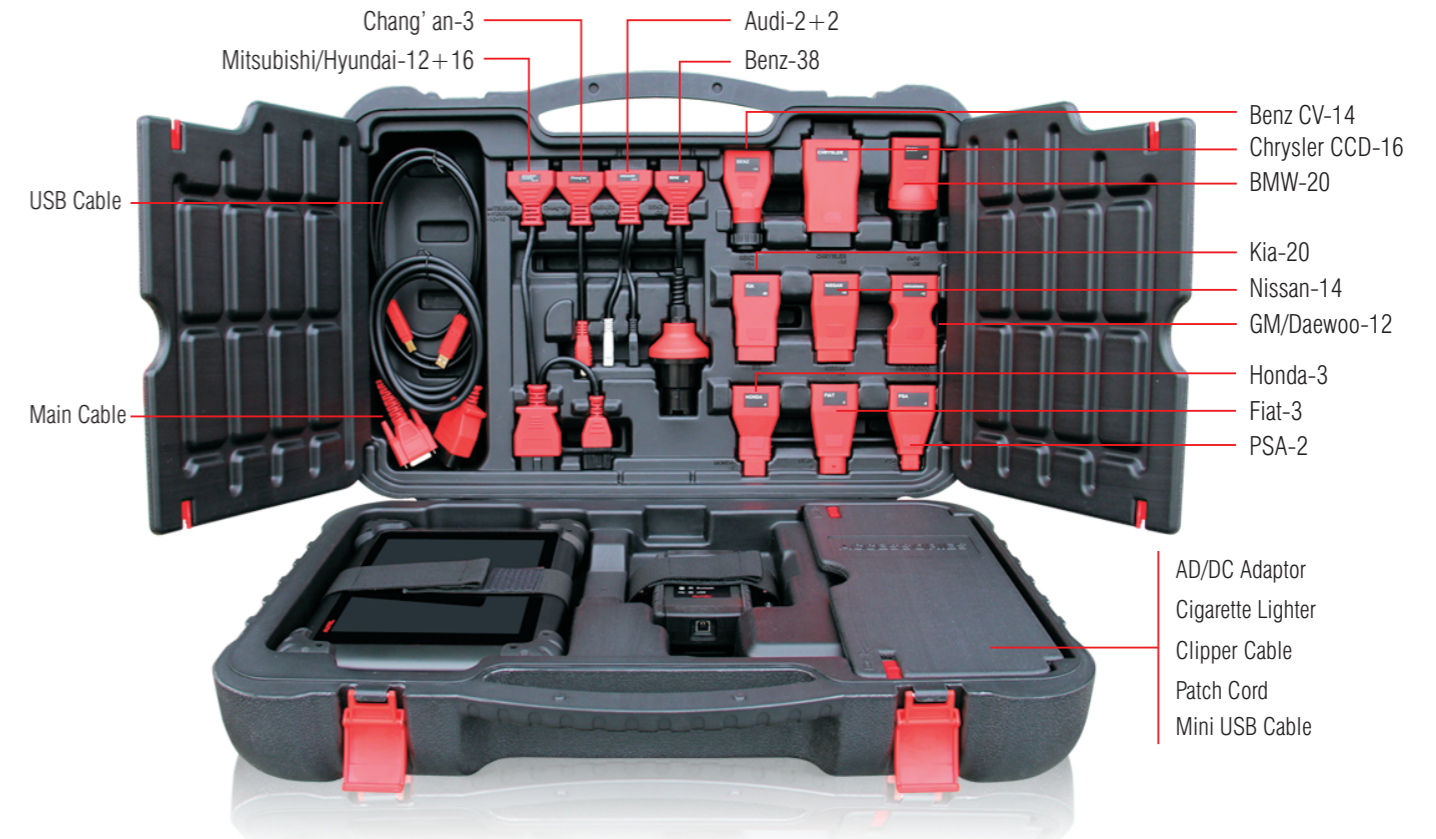
HARDWARE AND SOFTWARE



- Hardware**
- Extraordinarily powerful Cortex-A9 quad-core processor
 - 9.7" 1,024 x 768 LED-backlit glossy Multi Touch capacitive display with IPS technology
 - Internal reliable and fast 32GB Solid State Drive for better performance
 - Built-in 5-megapixel rear camera with autofocus and flashlight
 - Dual-band (2.4GHz & 5.0 Ghz) 802.11n Wi-Fi to access your favorite web resources
 - Unique shop tough ergonomic design features strong rubber protection and housing
 - Built-in rechargeable lithium-ion battery for up to 8 hours of continuous operation
 - USB, audio and auxiliary ports make it easy to connect accessories
 - The VCI connects wirelessly to the main unit with Long-Range Class 1 Bluetooth

- Software**
- Open source Android Operating System for fast boot-up and multitasking
 - Easy and intuitive navigation makes finding what you need simple and fast
 - Extensive vehicle coverage for more than 80 US, Asian and European vehicle makes
 - Complete capabilities for codes, live data, actuation tests, adaptations, coding and ECU programming
 - Displays live data in text, graph, analog and digital gauge for easy data review and analysis
 - Configures display options, sets triggers, records and plays back results with one touch
 - Records and plays back live data to pinpoint troubles of sensors and components
 - Cloud-based Data Manager saves customer and vehicle records, scanner data and technician notes
 - Remote technical support for convenient demonstration, training and increased customer satisfaction
 - Prints out recorded data anytime and anywhere with Wi-Fi technology
 - Automatic Wi-Fi updates available in new software releases

KIT INCLUDES



TECHNICAL SPECIFICATIONS

Operating System	Android™ 4.0, Ice Cream Sandwich		
Processor	Samsung Exynos Quad-Core Processor 1.4GHz		
Memory	2GB RAM & 32GB On-board Memory		
Display	9.7" LED capacitive touch screen with 1024x768P resolution		
Connectivity	• Ethernet: RJ45 Ethernet Connection	• Wi-Fi (802.11 a/b/g/n)	
	• USB: 2.0	• Bluetooth v.2.1 + EDR	
Camera (rear)	Rear-facing, 5.0 Megapixel, AF with Flashlight		
Sensors	Gravity Accelerometer, Ambient Light Sensor (ALS)		
Audio Input/Output	• Microphone	• Dual Speakers	• 4-Band 3.5 mm stereo/standard headset jack
Power and Battery	• 11000 mAh 3.7 V lithium-polymer battery	• Charging via 12 V AC/DC power supply	
Input Voltage	12 V (9-24 V)		
Power Consumption	6.5 W		
Operating Temperature	-10 to 55°C (14 to 131°F)		
Storage Temperature	-20 to 70°C (-4 to 158°F)		
Dimensions (W x H x D)	300 mm(11.81") x 220 mm(8.66") x 50 mm(1.97")		
Weight	NW: 1.42 kg (3.13 lb), MaxiSys GW: 8.655 kg (19.08 lb)/ MaxiSys Pro GW: 8.052 kg (17.75 lb)		
Protocols	ISO 9142-2, ISO 14230-2, ISO 15765-4, K/L lins, Flashing Code, SAE-J1850 VPW, SAE-J1850 PWM, CAN ISO 11898, Highspeed, Middlespeed, Lowspeed and Singlewire CAN, GM UART, UART Echo Byte Protocol, Honda Diag-H Protocol, TP 2.0, TP 1.6, SAE J1939, SAE J1708, Fault-Tolerant CAN		